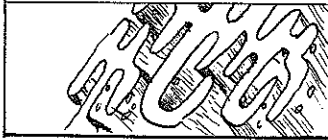


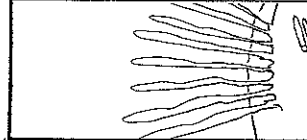
HERE ARE SIX MORE  
EUKARYOTIC CELL PARTS  
AND AN ANIMAL CELL  
DIAGRAM.



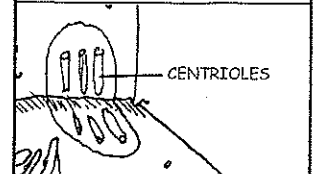
THE SMOOTH ENDOPLASMIC  
RETICULUM IS THE SITE  
OF LIPID PRODUCTION.



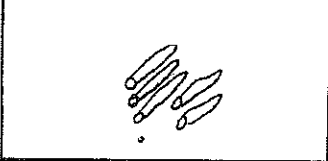
MANY CELLS HAVE CILIA.  
THOSE IN OUR AIRWAY  
TRAP DUST PARTICLES.



CENTRIOLES HELP THE  
CELL TO DIVIDE.



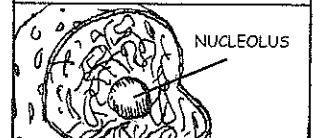
MICROTUBULES GIVE  
THE CELL STRUCTURE.



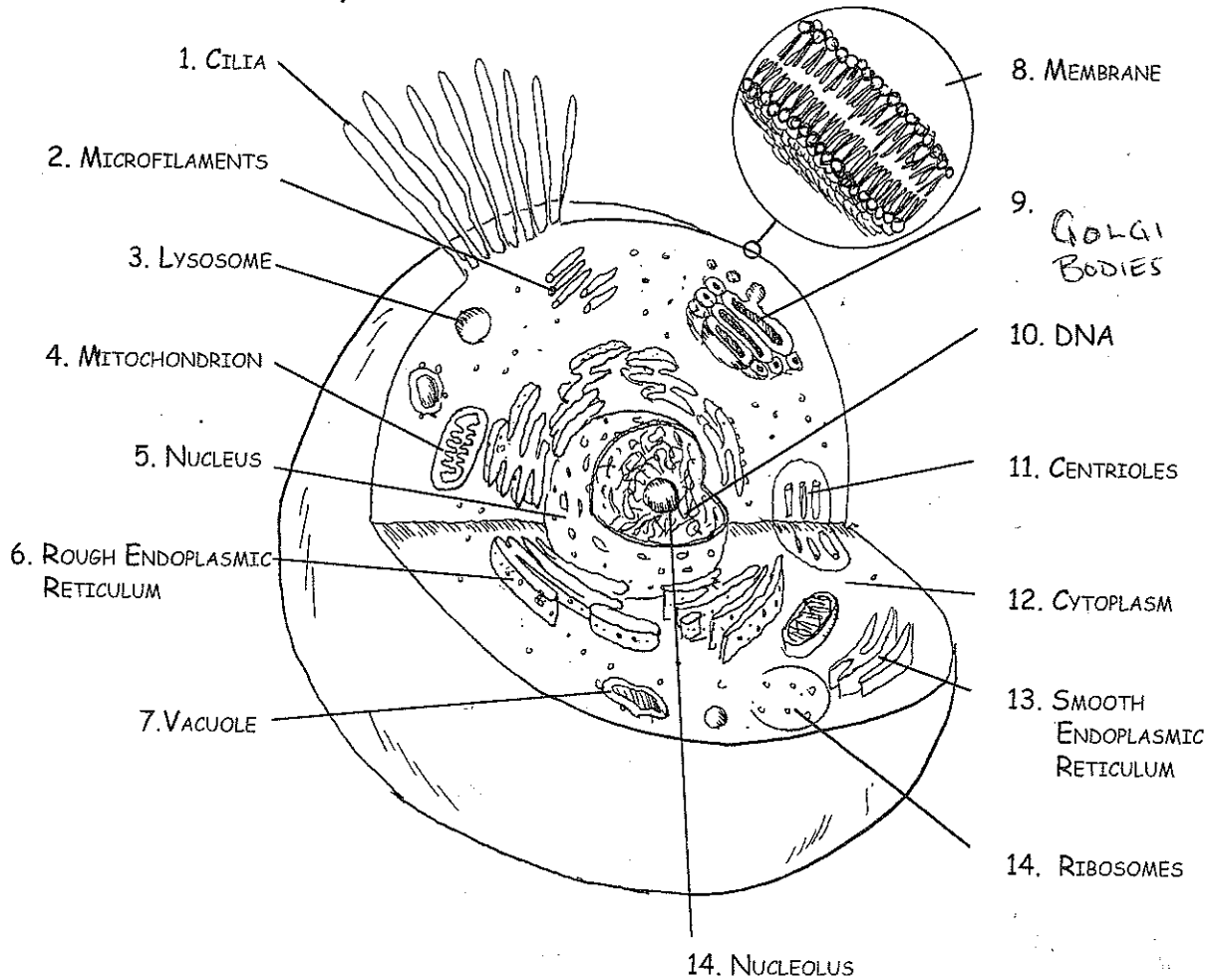
THE INSTRUCTIONS  
WITHIN DNA DIRECT  
THE CELL'S ACTIVITIES.



THE NUCLEOLUS  
IS THE SITE OF  
RIBOSOME PRODUCTION.

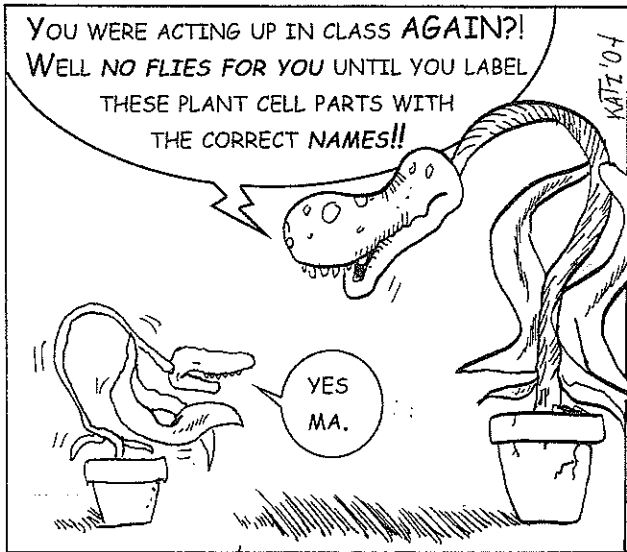


## ANIMAL CELL



KATZ'04

NAME: KEY  
CLASS: \_\_\_\_\_ DATE: \_\_\_\_\_



PLANT CELL PARTS

NUCLEUS	CHLOROPLAST
NUCLEOLUS	LARGE VACUOLE
DNA	MEMBRANE
MITOCHONDRION (2)	CELL WALL
ENDOPLASMIC RETICULUM	LYSOSOME
GOLGI BODY	MICROFILAMENTS
CYTOPLASM	RIBOSOMES

